

Arkansas PBIS Coaches' Newsletter

November 2020



In This Issue

- Upcoming Events
- Arkansas Highlights: Valley Springs School District
- Culturally Responsive Practices Corner
- Tier II Tidbit
- November Activity Guide for PBIS Coaches
- Resources

Upcoming Events

Friday, November 13: [Culturally Responsive Practices & PBIS](#) 9:00am-10:30am

Tuesday, November 17: [PBIS Coaches' Networking Session](#) 2:30pm-3:30pm

Check out our [Calendar](#) for all upcoming events!

Arkansas Highlights: Valley Springs School District

Kicking Off PBIS During a Pandemic

Thank you to Dr. Stacy Moore, School Psychologist from Valley Springs SD for this awesome submission! To read Dr. Moore's full, detailed update, complete with pictures, click [here](#).

Valley Springs School District made plans throughout 2019-2020 to “kickoff” PBIS at the beginning of the 2020-2021 school year. During our months of planning and training, none of us could have predicted the changes that would take place in the span of a few months. This year was certain to be unlike any other, but all three of our schools made the decision to forge ahead despite the unknowns and what-ifs. Our faculty and administration devised plans and back-up plans. We held planning meetings via Zoom and added new expectations of “technology” to our matrix. We are still learning and growing, but these are some of the ideas we have implemented to make PBIS work for our schools during these historic times.

Read more [here](#).



Culturally Responsive Practices Corner

Equity in a Tiered Framework

Equity is a Tier I issue. Teams cannot address inequitable student outcomes by providing Tier II and Tier III supports to students from groups who receive disproportionate rates of referrals and suspensions.

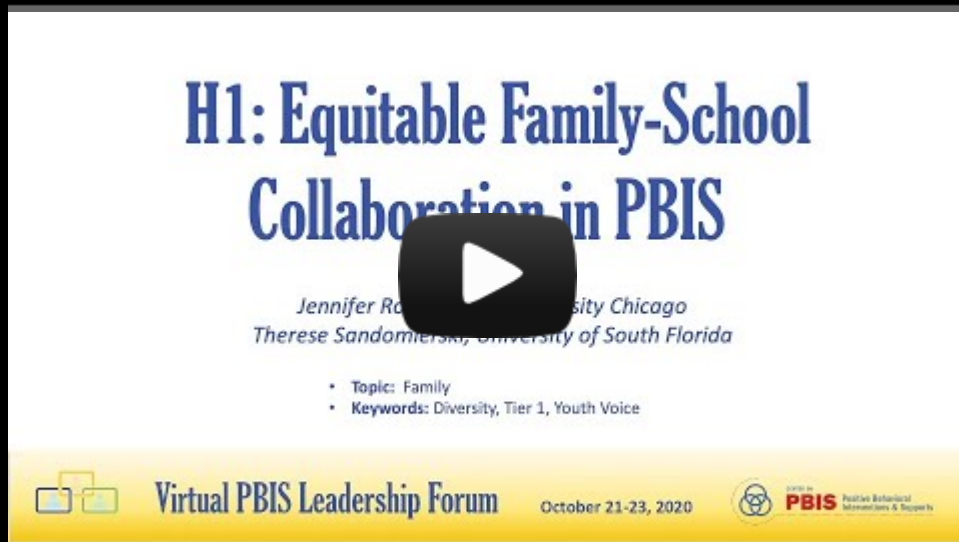
Tier I

School PBIS teams build Tier I systems honoring students' cultural strengths by **including student voices meaningfully** in classroom systems and **building positive student-teacher relationships**. School personnel can learn about their own cultural backgrounds and personal biases to define and teach school-wide and classroom expectations reflecting the values and norms of their students, families, and communities. To improve relationships, school personnel should use strategies to **acknowledge students meaningfully** and respond instructionally instead of punitively.

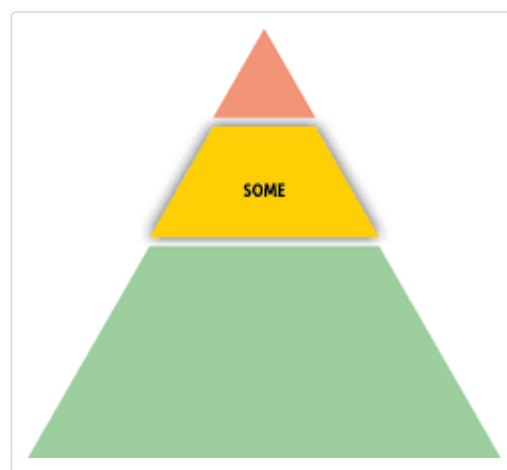
For more on Equity in a Tiered Framework, visit <https://www.pbis.org/topics/equity>.

The video below describes how to build equitable family-school collaboration through the integration of family and youth voice to enhance cultural responsiveness in PBIS, including strengthening family-school systems to address discipline disproportionality.

[Session H1] PBIS Forum 2020: Equitable Family-School Collaboration in PBIS



Tier II Tidbit



Are You Ready to Implement Tier II?

Tier II provides support for students who need more than Tier I, but not intensive, individualized interventions. Tier II interventions are continuously available, easy to implement, and focused on teaching students skills.

Are administration and staff committed to implementing Tier II? [Take the survey!](#)

Do you meet the readiness criteria?

- We are consistently scoring 70% or higher on the [TFI](#) for Tier I
- We are consistently scoring 80% or higher on the [Self-Assessment Survey](#).
- 80% of our students have 0 - 1 office referrals
- [Effective classroom practices](#) are being consistently implemented

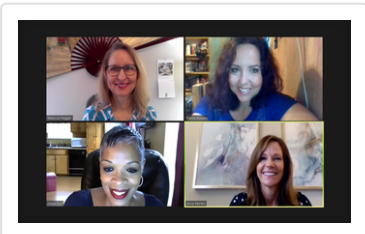
Click [here](#) for our Tier II Readiness Guide.

November Activity Guide for PBIS Coaches

	Evaluation	Training	Technical Assistance	Meetings
November	<ul style="list-style-type: none"> ❑ <i>Continue tracking progress on TFI and action steps</i> 	<ul style="list-style-type: none"> ❑ <i>Participate in planned team and/or coaches trainings</i> 	<p><i>Provide TA to Universal Teams: Yearly Planning Tools</i></p> <ul style="list-style-type: none"> ❑ School-wide data ❑ Teaching practices, celebrations, staff data update ❑ Plan for school board presentation ❑ Review/revise action plan ❑ Fall booster activities 	<p>Ongoing: Team Meeting Tools</p> <ul style="list-style-type: none"> ❑ <i>Prepare agenda & materials for District Leadership Team meeting</i> ❑ <i>Prepare agenda and materials for District Building-based Coaches Network Meeting</i> ❑ <i>Prepare agenda & materials for meeting with District Administrator for PBIS</i> ❑ <i>Prepare agenda & materials for Building-based Coaches meeting</i>
	<ul style="list-style-type: none"> ❑ <i>Continue Tracking progress on Culturally Responsive checklist and action steps</i> 		<ul style="list-style-type: none"> ❑ <i>Attend A-State: PBIS Monthly Coaching Networking Session via Zoom Optional support and guidance provided to Arkansas PBIS Coaches to ensure accurate and effective implementation</i> 	

Resources

- [Tiered Fidelity Inventory](#)
- [Tier I Training Modules](#)
- [Center on PBIS](#)
- [Center on PBIS: Tier II](#)
- [A 5-Point Intervention Approach for Enhancing Equity in School Discipline](#)
- [PBISApps Podcast: Restorative Practices](#)



Contact Us!

 Facebook  @astatecce

If you are interested in scheduling a virtual training, check out our services [here](#).

 Jonesboro, AR

 cce@astate.edu

 (870) 972-2287

 cce.astate.edu/pbis

